

Initial Fencing Area Starting on Thursday 6/6

Fenced Area

No Parking

Fenced Area

Orange Barricade

SHEET KEYNOTES

01	STAGING & LAY DOWN AREA, RE: BMP-37 & 44
02	CONSTRUCTION LIMITS
03	PORTA POTTY, BMP-50
04	SITE FENCING
05	SILT FENCE, RE: BMP-65 RE: A1/CE-501
06	VEHICLE / EQUIPMENT CLEANING, MAINTENANCE, AND REPAIR, RE: BMP-84
07	DUST CONTROL, ENTIRE SITE, RE: BMP-43
08	INLET PROTECTION SACK, RE: BMP-13, A3/CE-501
09	INLET PROTECTION AT GUTTER OR INLET, RE: BMP-74, B2/CE-501
10	DUMPSTER, RE: BMP-51
11	DEDICATED FUEL AREA, RE: BMP-83
12	STOCKPILE SEDIMENT/SOIL, RE: BMP-9 (LOCATION VARIES, CONTRACTOR TO COORDINATE WITH ISU)
13	SANDBAG SEDIMENT TRAP, BMP-70, RE: B1/CE-501

EROSION CONTROL NOTES

- ALL STANDARDS CALLED OUT AS "BMP" ARE PER CURRENT COPY OF THE STATE OF IDAHO CATALOG OF STORM WATER BEST MANAGEMENT PRACTICES.
- THE AREA OF DISTURBANCE IS GREATER THAN 1-ACRE. THE CONTRACTOR TO FILE A NOTICE OF INTENT (NOI) WITH THE ENVIRONMENTAL PROTECTION AGENCY. THE CONTRACTOR WILL NEED TO FILE THE NOI BEFORE COMMENCING CONSTRUCTION ACTIVITIES.
- CONSTRUCTION SITE SHALL CONFORM TO DUST CONTROL MANAGEMENT PER BMP-7.
- BMP-13: INLET PROTECTION METHOD SHALL BE BELOW GRADE, SUCH AS A DROP INLET INSERT WITH SEDIMENT RESERVOIR AND OVERFLOW PROTECTION, WHEN POSSIBLE. IF APPLICABLE, INLET PROTECTION ABOVE GRADE SHALL NOT INTERFERE WITH TRAFFIC.
- SILT FENCE, WATTLE, INLET PROTECTION, ETC. TO STAY IN PLACE THROUGH END OF PROJECT.
- EXISTING UTILITIES SHOWN IN APPROXIMATE LOCATION. CONTACT DIG LINE AT 1-800-342-1585 48 HOURS IN ADVANCE TO LOCATE UTILITIES PRIOR TO COMMENCING WORK. (RE: EXISTING SITE PLAN SHEETS V-100 THRU V-112)
- CONTRACTOR SHALL CLEAN ALL EXISTING ROADWAYS ON A REGULAR BASIS TO ENSURE NO MUD IS TRACKED OFF SITE.
- CONTRACTOR TO NOTIFY OWNER AND ENGINEER IF ANY HAZARDOUS MATERIALS, OR MATERIALS OF A QUESTIONABLE NATURE ARE FOUND. WORK TO BE STOPPED IN THOSE AREAS UNTIL MATERIAL IS DEEMED SAFE OR A PLAN FOR REMOVAL HAS BEEN MADE.

GENERAL SHEET NOTES

- STAGING & STOCK PILING AREA SHALL BE RETURNED TO EXISTING GRADING AND CONDITION PRIOR TO PROJECT COMPLETION.
- CONTRACTOR TO PROVIDE AN EROSION CONTROL AND SEDIMENTATION PLAN MEETING CITY OF POCATELLO REQUIREMENTS.
- CONTRACTOR TO COORDINATE WITH ISU FOR FINAL LOCATION OF SITE FENCING.
- CONCRETE WASTE TO BE DISPOSED OFF SITE.

KELLER ASSOCIATES
 305 North 3rd Ave, Suite A
 Pocatello, Idaho 83201
 (208) 238-2146

PROFESSIONAL ENGINEER
 MATTHEW B. HILL
 LICENSE NO. 15381
 EXPIRES 3/26/2024
 STATE OF IDAHO

NO.	REVISIONS	DATE

This document or any part thereof in detail or design, including drawings, specifications, and data, shall not be copied, reproduced, or transmitted in any form without the written authorization of Keller Associates, Inc.

DPW PROJECT #21-654
 ISU: REPAIR UTILITY TUNNEL

IDAHO STATE UNIVERSITY
 STAGING, EROSION & SEDIMENTATION CONTROL PLAN

DRAWN: KJW	CHECK: HGB
VERIFY SCALE: Scales based on 22"x34" prints.	
PROJECT NO. 208106-088	
SHEET NO. CE-101	

ISU Geosciences Department

St John's Center

Physical Science/Complex

Job trailer

Initial Fencing Area Starting on Thursday 6/6

No Parking

Swanson Arch

No Parking

Frazier Hall

Fenced Area

Fenced Area

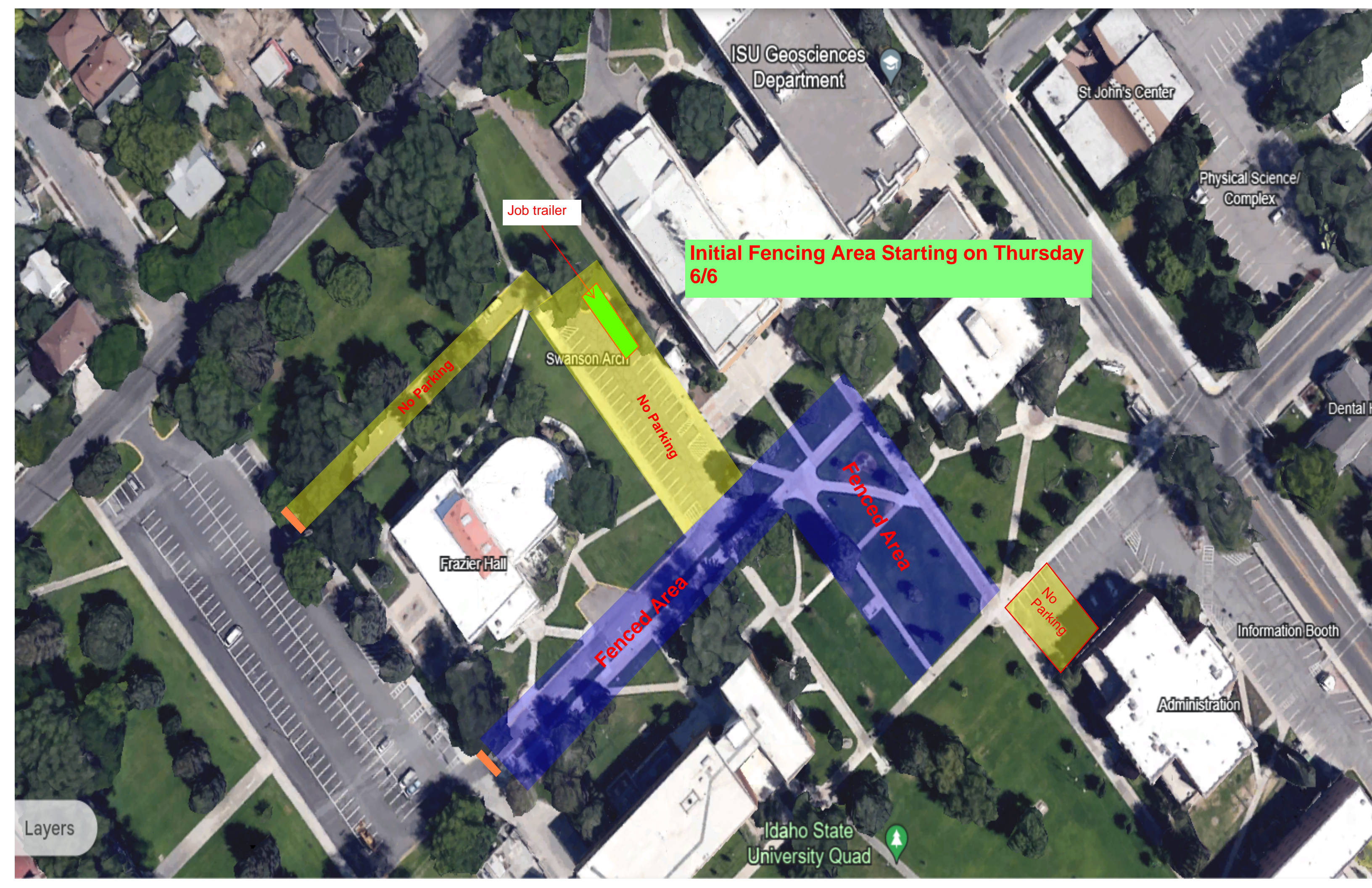
No Parking

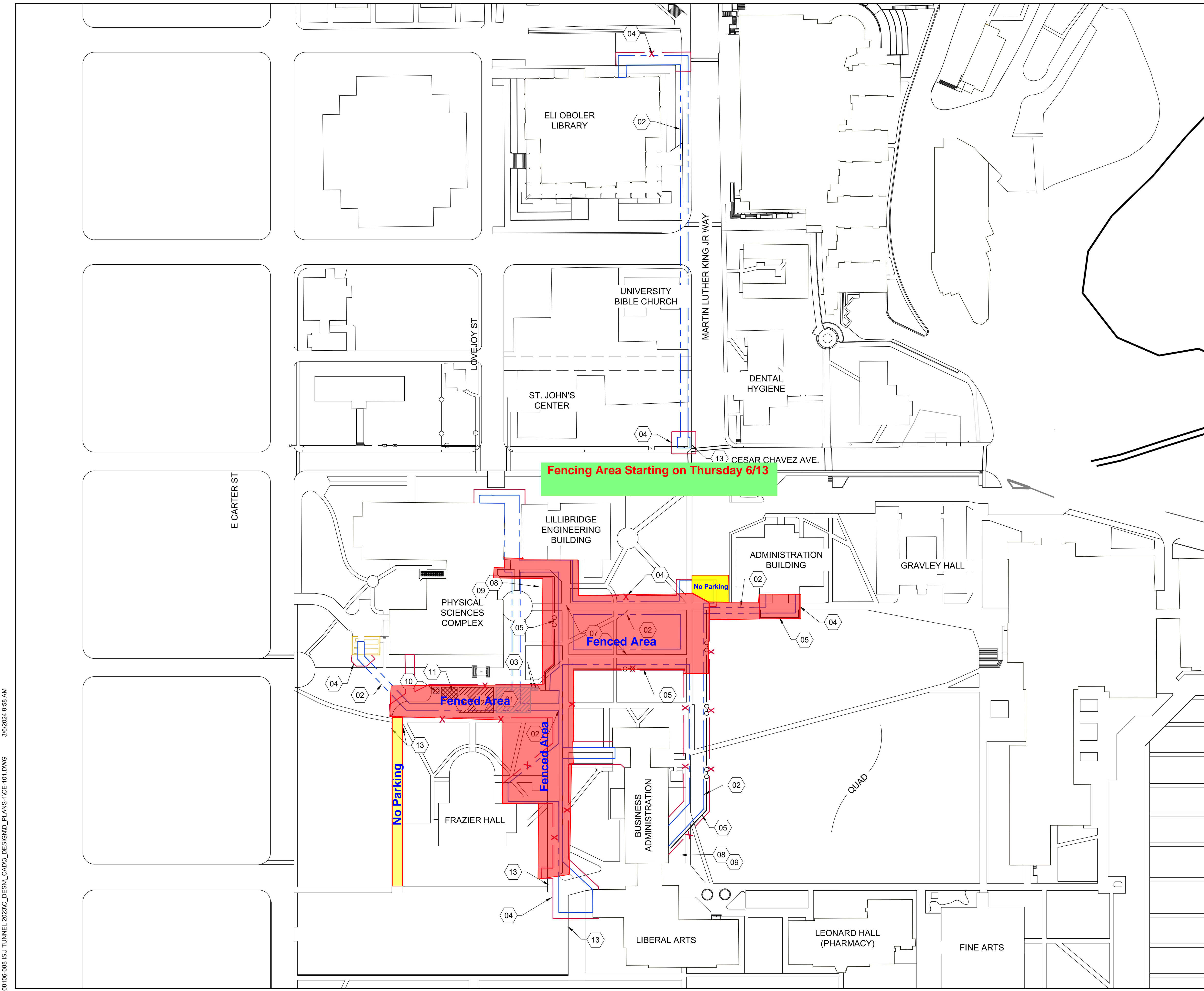
Information Booth

Administration

Idaho State University Quad

Layers





SHEET KEYNOTES

01	STAGING & LAY DOWN AREA, RE: BMP-37 & 44
02	CONSTRUCTION LIMITS
03	PORTA POTTY, BMP-50
04	SITE FENCING
05	SILT FENCE, RE: BMP-65 RE: A1/CE-501
06	VEHICLE / EQUIPMENT CLEANING, MAINTENANCE, AND REPAIR, RE: BMP-84
07	DUST CONTROL, ENTIRE SITE, RE: BMP-43
08	INLET PROTECTION SACK, RE: BMP-13, A3/CE-501
09	INLET PROTECTION AT GUTTER OR INLET, RE: BMP-74, B2/CE-501
10	DUMPSTER, RE: BMP-51
11	DEDICATED FUEL AREA, RE: BMP-83
12	STOCKPILE SEDIMENT/SOIL, RE: BMP-9 (LOCATION VARIES, CONTRACTOR TO COORDINATE WITH ISU)
13	SANDBAG SEDIMENT TRAP, BMP-70, RE: B1/CE-501

- ### EROSION CONTROL NOTES
- ALL STANDARDS CALLED OUT AS "BMP" ARE PER CURRENT COPY OF THE STATE OF IDAHO CATALOG OF STORM WATER BEST MANAGEMENT PRACTICES.
 - THE AREA OF DISTURBANCE IS GREATER THAN 1-ACRE. THE CONTRACTOR TO FILE A NOTICE OF INTENT (NOI) WITH THE ENVIRONMENTAL PROTECTION AGENCY. THE CONTRACTOR WILL NEED TO FILE THE NOI BEFORE COMMENCING CONSTRUCTION ACTIVITIES.
 - CONSTRUCTION SITE SHALL CONFORM TO DUST CONTROL MANAGEMENT PER BMP-7.
 - BMP-13: INLET PROTECTION METHOD SHALL BE BELOW GRADE, SUCH AS A DROP INLET INSERT WITH SEDIMENT RESERVOIR AND OVERFLOW PROTECTION, WHEN POSSIBLE. IF APPLICABLE, INLET PROTECTION ABOVE GRADE SHALL NOT INTERFERE WITH TRAFFIC.
 - SILT FENCE, WATTLE, INLET PROTECTION, ETC. TO STAY IN PLACE THROUGH END OF PROJECT.
 - EXISTING UTILITIES SHOWN IN APPROXIMATE LOCATION. CONTACT DIG LINE AT 1-800-342-1585 48 HOURS IN ADVANCE TO LOCATE UTILITIES PRIOR TO COMMENCING WORK. (RE: EXISTING SITE PLAN SHEETS V-100 THRU V-112)
 - CONTRACTOR SHALL CLEAN ALL EXISTING ROADWAYS ON A REGULAR BASIS TO ENSURE NO MUD IS TRACKED OFF SITE.
 - CONTRACTOR TO NOTIFY OWNER AND ENGINEER IF ANY HAZARDOUS MATERIALS, OR MATERIALS OF A QUESTIONABLE NATURE ARE FOUND. WORK TO BE STOPPED IN THOSE AREAS UNTIL MATERIAL IS DEEMED SAFE OR A PLAN FOR REMOVAL HAS BEEN MADE.

- ### GENERAL SHEET NOTES
- STAGING & STOCK PILING AREA SHALL BE RETURNED TO EXISTING GRADING AND CONDITION PRIOR TO PROJECT COMPLETION.
 - CONTRACTOR TO PROVIDE AN EROSION CONTROL AND SEDIMENTATION PLAN MEETING CITY OF POCATELLO REQUIREMENTS.
 - CONTRACTOR TO COORDINATE WITH ISU FOR FINAL LOCATION OF SITE FENCING.
 - CONCRETE WASTE TO BE DISPOSED OFF SITE.

KELLER ASSOCIATES
 305 North 3rd Ave, Suite A
 Pocatello, Idaho 83201
 (208) 238-2146

PROFESSIONAL ENGINEER
 MATTHEW B. HILL
 LICENSE NO. 15381
 EXPIRES 3/26/2024
 STATE OF IDAHO

NO.	REVISIONS	DATE

This document or any part thereof in detail or design, is the property of Keller Associates, Inc. and shall not be copied in any form without the written authorization of Keller Associates, Inc.

DPW PROJECT #21-654
 ISU: REPAIR UTILITY TUNNEL

IDAHO STATE UNIVERSITY
 STAGING, EROSION & SEDIMENTATION CONTROL PLAN

DRAWN: KJW CHECK: HGB
 VERIFY SCALE: Scales based on 22"x34" prints.
 1-1/2 Inches
 PROJECT NO. 208106-088
 SHEET NO. CE-101

Fencing Area Starting on Thursday 6/13

Job trailer

No Parking

Swanson Arch

Frazier Hall

No Parking

Administration

ISU Geosciences Department

St John's Center

Physical Science/ Complex

Engineering - Lillibridge

Dental H

Information Booth

Idaho State University Quad

Layers

