



Idaho State  
University

# NEWSLETTER

COLLEGE OF ARTS AND LETTERS

SEPTEMBER 2024



## Art Meets Ecology: Exhibition and Seed Bomb Workshop at ISU

Collier's Unlawning America project, which has been gaining recognition nationwide, advocates for the transition of unused lawn spaces into meadows that support pollinators and improve local ecosystems.



Visiting Artist

## ROAR Together

*Building Idaho's Future with INCLUDE Communities: Rockland, ID*

How the small town of Rockland, Idaho, led by Superintendent Greg Larson, connects its community, expands educational opportunities, and preserves its strong traditions while preparing students for a brighter future.



Read ROAR Together

# INBRE Awards

ISU was well represented at this year's INBRE. ISU-affiliated fellows brought home four out of six poster awards, with several students and faculty members receiving honors. In the Student Choice category, College of Arts and Letters students Liv Peters, Alleyna Martes, Aimee Bozeman, and Leticia Herrera, mentored by Dr. Michele Brumley, earned third place for their research project titled *"Mother Knows Best: Effect of Maternal Hyposmia on Weight Bearing Locomotion in Neonatal Spinal-Transected Rats."*



INBRE 2024 Awards

## ISU Magazine Fall 2024 Edition Launches as Part of ISU Celebration Week

From plastic-eating mushrooms with potential to change the world, to students making musical albums with famous composers, and manikins so lifelike that future health care professionals can gain practice delivering a baby, this year's issue of the Idaho State Magazine has an array of incredible stories you won't want to miss.



ISU Fall 24 Magazine

## From Idaho to Panama: Music Across Borders

Discover how Idaho State's Nell Flanders is bridging cultures through music, from conducting Panama's National Symphony to exploring future collaborations for ISU students abroad.



[Read Music Across Borders](#)

## [Political Science Podcast](#)

Listen to the latest episode of The Polisci Connection as ISU graduate Eizaak Jordan shares how his political science degree and experiences at ISU helped him build a successful career in conservation.

## Donor Support Continues at ISU

Idaho State University received over \$18 million in philanthropic contributions for fiscal year 2024, surpassing last year's total by nearly \$4 million.



[Read about donor support](#)



### Donate Your Surplus Produce to Benny's Pantry

Did you know that ISU's Benny's Pantry takes donations of fresh produce? If you have a surplus from your fruit trees or gardens please contact Lesa Crawford at (208) 282-2794 to make a donation. Fresh produce is gold for our patrons!

On November 1, 2024, the Department of Art will host its eleventh annual Art a la Carte Silent Auction. We welcome donations of artwork from students, alumni, and faculty. Items need to be ready to hang or display. All media accepted. Proceeds fund student scholarships, visiting artists, and department needs.



CALL FOR ARTWORK

## Faculty Achievements



### Professor Njoku Publishes Book

Congratulations to Professor Raphael Njoku on the publication of his new book, *Queen Elizabeth II and the Africans: Narrating Decolonization, Postwar Commonwealth, and Africa's Development, 1947-2022* (Leuven University Press/Cornell, 2024)! This important work sheds light on a significant era of history and its ongoing impact.



### Study on Chilean Theatre Works Examines How Humour and Play Illuminate Dictatorship Trauma

"In my current research, I continue to be very motivated by studying the nuances of humor that are unique to different cultural settings, and the experiences of children who live through trauma."

[Read the article](#)

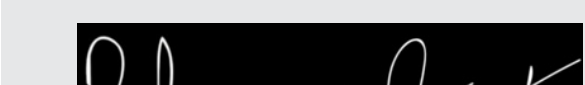


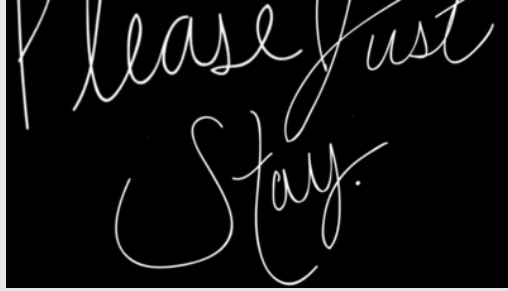
### Professor Lybecker Selected as Ambassador

Congratulations to Professor Donna Lybecker of Political Science, and Director of the Global Studies Program, for being selected as a 2024-2025 Higher Education Ambassador for the Council on Foreign Relations. This prestigious nine-month program connects educators nationwide with accessible resources, professional development opportunities, and a network of professionals dedicated to equipping students with the knowledge and skills to navigate today's interconnected world, helping prepare the next generation of informed global citizens.

[Higher Education Ambassador](#)

## Suicide Prevention Month





## Double Your Impact for Suicide Prevention Research

To mark this important time of awareness, the DeCous will match every dollar donated to the DeCou Family Endowment, up to \$5,000, doubling the impact of contributions on suicide prevention research at ISU.

Donate for Suicide Prevention

**ISU IMPACT:**  
**ENGAGING WITH THE COLLEGE OF ARTS AND LETTERS**

Idaho State University  
 College of Arts and Letters

## ISU Impact: Engaging With the College of Arts and Letters

Tune in as Dean Kandi Turley-Ames and Dr. Rick Pongratz discuss vital suicide prevention efforts, mental health challenges, and the supportive resources available in this important podcast episode.

## What is ISU doing about the mental health crisis in the state?

ISU's Social Work program is addressing the rural social work shortage by prioritizing Idaho students, particularly those in underserved areas. The demand for ISU's Master of Social Work (MSW) program has grown statewide, with applicants from every region of Idaho in 2024. Since 1995, ISU's doctoral psychology program has trained over 100 psychologists with a 100% licensure rate, preparing students for careers in academia, medical centers, and private practice.

GAPS IN MENTAL HEALTHCARE ACCESS BY STATE



Mental Health Care Around the State

Simulation Training

# Events

All ISU Events

SOPA Events



## Visibility, Art Show

September 30 - October 25 | Fine Arts J.B. Davis Gallery | M-F 12-6

This exhibition showcases artwork created by LGBTQ artists working in our community.



## Visiting Artist Workshop: Seedbombs

September 30 | 4:30 PM | Fine Arts room 303 | Free

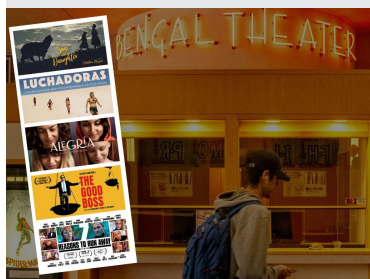
Join us for a free hands-on "seed bomb" workshop and help restore local ecosystems with native pollinator-friendly plants!



## Argentine Tango Dance Course

Mondays Sep 30 - Nov 4 | 7-8 PM | Red Hill building room 103 | Free 6-week course

Get ready to dance—open to all, no prior experience needed! Wear socks or soft-soled dance shoes, no partner necessary.



## Hispanic Film Festival: Celebrating the Hispanic World

October 1, 8, 15, 22, 29 | 6:30 PM | Bengal Theatre | Free

Celebrando el mundo hispano. Join us for ISU's Hispanic Film Festival during National Hispanic Heritage Month, featuring 5 thought-provoking films with English subtitles at the Bengal Theater in October. Free and open to the ISU and Pocatello community. Mayor Brian Blad will be opening the festival on Tuesday.



## Poetry Reading: Kerri Webster

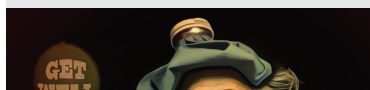
October 3 | 5 PM | Little Wood River in the SUB | Free

Poet Kerri Webster, Idaho's current Writer in Residence and author of the poetry collection *Lapis* (Wesleyan University Press 2022), will hold a poetry reading.

## ISU Theater: The Imaginary Invalid

October 4, 5, 10, 11, 12 | 7:30 - 9:30 PM | Black Box Theater

ISU Theatre presents "Imaginary Invalid," a witty and hilarious satire about a hypochondriac's schemes for personal gain.



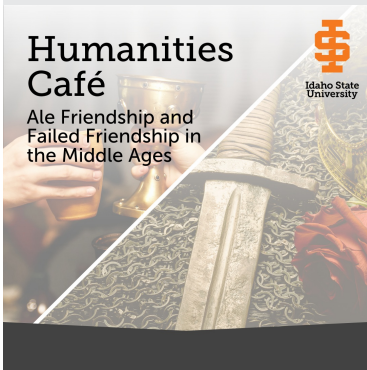




## ISU Symphonic and Civic Band Concert: Epic Narratives

October 9 | 7:30 PM | Jensen Hall

Presenting an epic themed concert, featuring the rarely performed "Noah's Ark" and powerful works by Copley, Hindemith, Reed, Bernstein, and more.



## Ale Friendship and Failed Friendship in the Middle Ages

October 10 | 6 PM | Union Tap Room | Free

Join us for a lively evening of medieval tales, free food, and no-host bar as we explore friendship, beer, and murder in early England.

## Mountain West Marching Band Invitational

October 19 | 9 AM - 5 PM | ICCU Dome

Witness the power of music and precision as marching bands from various high schools throughout the state come together to deliver energetic performances at the ICCU Dome.



## ISU Choral Invitational Festival Concert

October 19 | 7 PM | Jensen Hall

This vocal event features clinic participation by high school students around the state, culminating in a spectacular Jensen Grand Concert Hall performance, including our very own ISU Choirs.



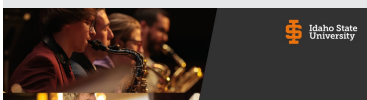
## The Presidents Own Marine Band

October 24 | 7:30 PM | Jensen Hall | Free

For the first time in 10 years, "The President's Own" United States Marine Band returns to Pocatello, Idaho as part of the band's Coast to Coast tour.



## Jazz Big Band and Commercial Music Concert:





## Stevie Wonder Music

October 25 | 7:30 PM | Jensen Hall

Debut of the commercial music big band. Join us for an evening filled with soulful melodies and infectious rhythms inspired by the one and only Stevie Wonder that will have you dancing in your seat.



## LGBT History Month Events

October 1, 3, 9, 15, 17, 22, 23, 30 | Free

Join us for a series of events, open to the public, in recognition and celebration of LGBT History Month in October!

# Announcements

## Interested in languages, culture, and history?

Join ANTH 4454/5554: Survey of Native American Languages on Thursdays, 4-6:30 PM! Synchronous Online. Currently waiving the pre-requisite! For more information or to enroll, contact Elizabeth Redd at [lizkickham@isu.edu](mailto:lizkickham@isu.edu).

---

The College of Arts and Letters is accepting proposals for travel funds from full-time undergraduate students in the college. See the [\*attached proposal for more information.\*](#)

---

Would you be interested in a club for rural students at ISU?

Yes

No

---

**Contact us. We'd love to hear from you!**

208-282-3204 | [cal@isu.edu](mailto:cal@isu.edu)

